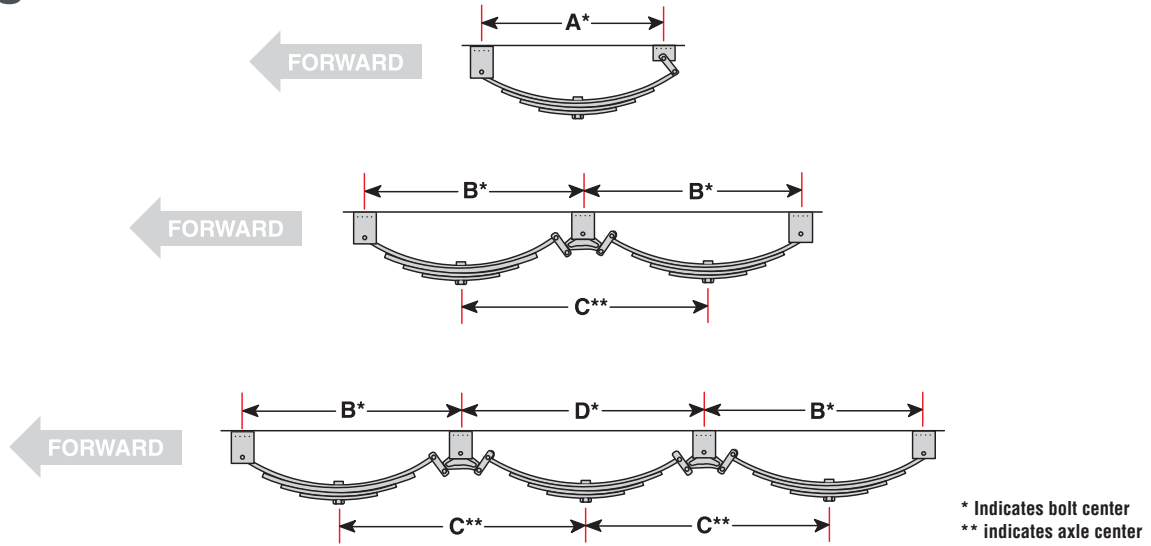


# Attaching Parts Kits

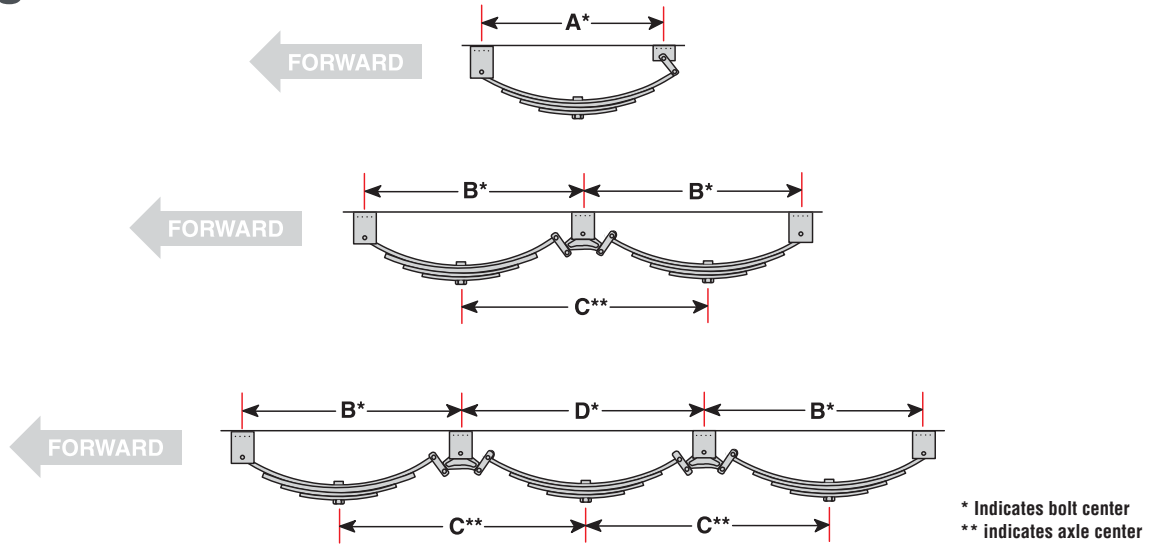


## Double Eye Spring A/P Kits

Axle	HGR Kit P/N	Hangers			Shackle Link	Equalizer	HGR Location*				Spring	Spring Length	Spring Width
		Front	Center	Rear			A	B	C	D			
Single	9901	7404	—	7401	7502	—	25 1/8"	—	—	—	8103	25 1/4"	1 3/4"
Single	9914	7403	—	7401	7502	—	25 1/8"	—	—	—	8103	25 1/4"	1 3/4"
Single	9926	7403	—	7401	7502	—	25 1/8"	—	—	—	8103	25 1/4"	1 3/4"
Single	9928	—	—	—	7507	—	25 1/8"	—	—	—	8103	25 1/4"	1 3/4"
Single	9942	—	—	—	7503	—	25 1/8"	—	—	—	8103	25 1/4"	1 3/4"
Single	9953	—	—	—	7504	—	25 1/8"	—	—	—	8103	25 1/4"	1 3/4"
Single	9973	7404	—	7401	7507	—	25 1/8"	—	—	—	8103	25 1/4"	1 3/4"
Tandem	9905	7404	7402	7404	7502	8302	—	30 1/2"	35 3/4"	—	8103	25 1/4"	1 3/4"
Tandem	9906	7404	7402	7404	7502	8301	—	29 3/4"	34 1/4"	—	8103	25 1/4"	1 3/4"
Tandem	9907	7402	7405	7402	7502	8302	—	30 1/2"	35 3/4"	—	8103	25 1/4"	1 3/4"
Tandem	9910	7402	7402	7402	7502	8302	—	30 1/2"	35 3/4"	—	8103	25 1/4"	1 3/4"
Tandem	9912	7403	7403	7403	7502	8302	—	29 3/4"	34 1/4"	—	8103	25 1/4"	1 3/4"
Tandem	9913	7402	7402	7402	7504	8304	—	29 3/4"	34 1/4"	—	8103	25 1/4"	1 3/4"
Tandem	9915	—	—	—	7504	8305	—	29 3/4"	34 1/4"	—	8103	25 1/4"	1 3/4"
Tandem	9918	—	—	—	7502	8304	—	29 3/4"	34 1/4"	—	8103	25 1/4"	1 3/4"
Tandem	9920	—	—	—	7505/7504	8305	—	29 3/4"	34 1/4"	—	8103	25 1/4"	1 3/4"
Tandem	9922	—	—	—	7504	8304	—	29 1/2"	33 3/4"	—	8103	25 1/4"	1 3/4"
Tandem	9925	7403	7403	7403	7502	8304	—	29 3/4"	34 1/4"	—	8103	25 1/4"	1 3/4"
Tandem	9927	7403	7403	7403	7502	8301	—	29 3/4"	34 1/4"	—	8103	25 1/4"	1 3/4"
Tandem	9949	—	—	—	7505/7504	8302	—	30 1/2"	35 3/4"	—	8103	25 1/4"	1 3/4"
Tandem	9957	—	—	—	7502	8304	—	29 3/4"	34 1/4"	—	8103	25 1/4"	1 3/4"
Tandem	9964	—	—	—	7502	8304	—	29 3/4"	34 1/4"	—	8103	25 1/4"	1 3/4"
Tandem	9971	7403	7403	7403	7507	8302	—	30 1/2"	35 3/4"	—	8103	25 1/4"	1 3/4"
Triple	9921	—	—	—	7504	8305	—	30 1/2"	35 3/4"	35 3/4"	8103	25 1/4"	1 3/4"
Triple	9963	—	—	—	7504	8324/8302	—	29 1/2"	33"	33"	8103	25 1/4"	1 3/4"

\* When using different spring lengths add or subtract length variance.  
All kits include nuts and bolts. Other kits available upon request.

# Attaching Parts Kits

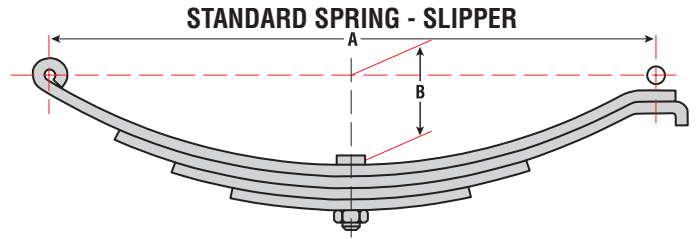
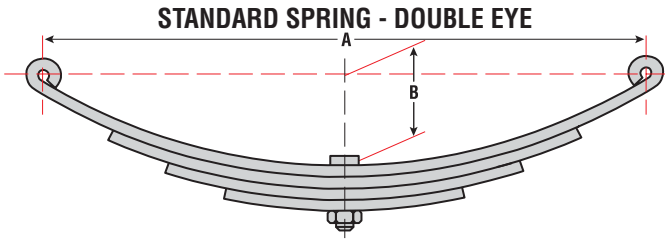


## Slipper Spring A/P Kits

Axle	HGR Kit P/N	Hangers			Shackle Link	Equalizer	HGR Location*				Spring	Spring Length	Spring Width
		Front	Center	Rear			A	B	C	D			
Single	9903	7406	—	7408	—	—	24 1/2"	—	—	—	8112	26"	2"
Single	9923	7404	—	7411	—	—	24 1/4"	—	—	—	8112	26"	2"
Tandem	9904	7404	7407	7408	—	8303	—	29 1/4"	32 1/2"	—	8112	26"	2"
Tandem	9975	7406	7407	7408	—	8331	—	28 3/4"	32"	—	8109	26"	2"
Triple	9930	7406	7407	7408	—	8303	—	32 3/4"	36"	36"	8110	29 1/2"	2"
Triple	9978	7406	7407	7408	—	8331	—	32 3/4"	36"	32 3/4"	8110	29 1/2"	2"

\* When using different spring lengths add or subtract length variance.  
All kits include nuts and bolts. Other kits available upon request.

# Leaf Springs

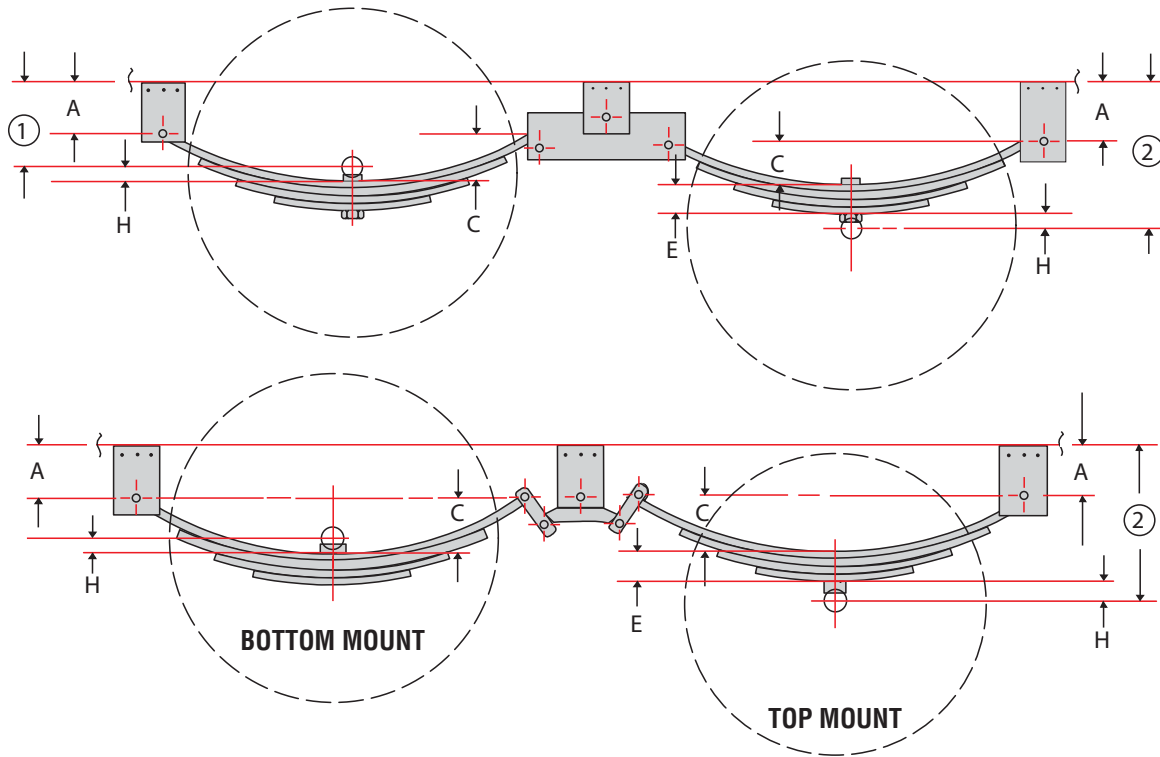


## AL-KO Leaf Spring Reference Chart

Spring P/N	Reference Number	Spring Capacity	Free Length (A)	Spring Width	Free Arch (B)	# of Leaves	Type	Axle Capacity
8124	9318203 / WC-2	600	24.000"	2.00"	4.00"	2	SL	1200
8126	WIE-3	840	24.250"	1.75"	4.00"	3	SL	1680
8142	BT25-9	950	25.000"	1.75"	3.50"	3	SL	1900
8154	BT25-22	1750	25.000"	1.75"	3.50"	3	SL	3500
8112	93167 / UNA-230 / 80-3T3	2000	26.000"	2.00"	2.63"	4	SL	4000
8113	E-5266 / EMCO-160	3400	26.500"	2.00"	3.50"	5	SL	6800
8109	120-3T3	3500	26.125"	2.00"	3.50"	5	SL	7000
8110	E-5115	4000	29.500"	2.00"	3.50"	6	SL	8000
8111	140-3T3-SE	4000	26.875"	2.00"	2.63"	7	SL	8000
8139	140-3T3-LE	4000	26.125"	2.00"	3.00"	7	SL	8000
09318204	9318204	750	26.000"	1.75"	4.50"	2	DE	1500
8107	UNA-120 / 93162	1000	20.250"	1.75"	3.50"	4	DE	2000
8117	UNA-169 / 1020	1000	20.375"	1.75"	3.18"	3	DE	2000
8123	SW-2	1000	25.250"	1.75"	3.00"	2	DE	2000
8101	LT PP3 / PR 722 / UNA-219 / 72-22	1250	25.250"	1.75"	3.19"	5	DE	2700
8102	UNA-217	1500	25.250"	1.75"	3.00"	3	DE	3000
8118	UNA-041	1500	20.000"	1.75"	3.25"	3	DE	3000
8119	93182-12	1500	23.250"	1.75"	3.00"	3	DE	3000
8144	AWS-3 / 9318206	1500	26.000"	1.75"	4.25"	3	DE	3000
093178	93178	1500	20.250"	1.75"	3.56"	4	DE	3000
8103	SW4B / PR-4B	1750	25.250"	1.75"	3.00"	4	DE	3500
8115	SW-3 / 72-24	1750	25.250"	1.75"	3.00"	3	DE	3500
8116	UNA-216 / 72-09	1750	23.125"	1.75"	3.50"	3	DE	3500
8143	PR-3	1750	25.250"	1.75"	3.00"	3	DE	3500
093185	93185	1750	27.250"	1.75"	2.34"	4	DE	3500
093153	AWS-4	2000	26.000"	1.75"	4.25"	4	DE	4000
8104	72-25, UNA 218	2200	25.250"	1.75"	3.19"	4	DE	4400
093155	AWS-5 / TBT-104	2500	26.000"	1.75"	4.25"	5	DE	5000
8105	UNA-218 / SW4	2500	25.250"	1.75"	3.00"	4	DE	5000
093183	93183	2900	23.250"	1.75"	3.13"	4	DE	5800
09315450	AWS-6	3000	26.000"	1.75"	4.25"	6	DE	6000
8106	UNA-221 / ML-4 / 93115 / MR-4	3000	25.125"	1.75"	2.94"	4	DE	6000
8108	PP-5 / SW-5	3000	25.250"	1.75"	3.56"	5	DE	6000
093154	AWS-7	3500	26.000"	1.75"	4.25"	7	DE	7000
8114	PP-6 / UNA-222 / 72-27	3500	24.875"	1.75"	3.38"	6	DE	7000
8149	WIF3 / UNA039 / 4331-15	1500	30.500"	1.75"	4.50"	3	SL	3000

Suspension Components

# Axle / Frame Attaching Diagram



## Note:

**H** = Tube Center to Spring Pad Surface

- 1 3/4" for 2 3/8" Tube (3.5K)
- 2" for 3" Tube (4.4K - 7K)

**C** = Spring Arch (See Spring Chart Pg.29)

**E** = No. of Leaves x Leaf Thickness (Top Mount Only)

**A** = Top of Hanger to Spring Eye Center (See Hanger Chart Pg. 28)

## Formula:

$$\textcircled{1} = A + C - H \text{ (For Bottom Mount)}$$

$$\textcircled{2} = A + C + E + H \text{ (For Top Mount)}$$

For Fully Loaded Trailer Subtract 1 1/2"  
from Dimension  $\textcircled{1}$  or  $\textcircled{2}$

## Example:

$$H = 1 \frac{3}{4}"$$

$$C = 3 \frac{1}{2}"$$

$$E = (4 \text{ Leaves} \times .323)$$

$$A = 3 \frac{1}{4}"$$

$$\begin{aligned} \textcircled{1} &= (3 \frac{1}{4}" + 3 \frac{1}{2}") - 1 \frac{3}{4}" \\ &= (6 \frac{3}{4}") - 1 \frac{3}{4}" \\ &= 5" \end{aligned}$$

$$\begin{aligned} \textcircled{2} &= 3 \frac{1}{4}" + 3 \frac{1}{2}" + (4 \times .323) + 1 \frac{3}{4}" \\ &= 3 \frac{1}{4}" + 3 \frac{1}{2}" + (1.292) + 1 \frac{3}{4}" \\ &= 8 \frac{1}{2}" + 1.292 \\ &= 9.792" \\ &= 9 \frac{3}{4}" \end{aligned}$$

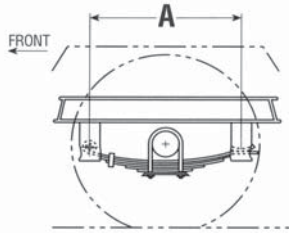
## WARNING:

AL-KO Kober Corporation manufacture hubs and drums that are compatible with many wheels used in the trailer industry that have matching bolt patterns. AL-KO does not manufacture wheels, nor do they recommend a specific wheel for compatibility with the hubs and drums they manufacture. The wheel manufacturer should be contacted for proof of compatibility before use.

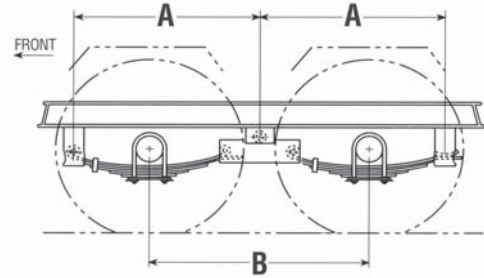
# Attaching Parts Kits

AL-KO 10K - 16K

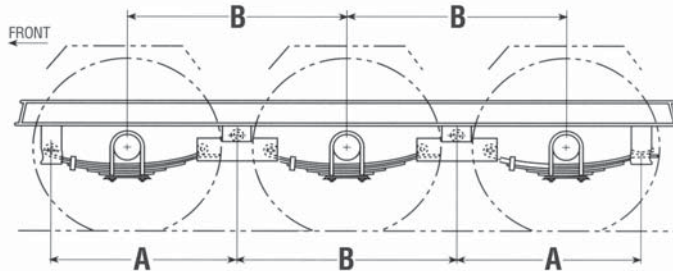
## SINGLE AXLE



## TANDEM AXLE



## TRIPLE AXLE



### Parts List

Single AP Kit: Part No. 9941  
A - 29 1/4" B - N/A Equalizer - N/A

Qty.	Part Description	AL-KO Part No.
2	Front Hanger	7417
2	Rear Hanger	7418
4	Hanger Nut, 3/4" - 10 UNC Lock	6715
2	Hanger Bolt, 3/4" - 10 UNC-2A x 4 3/4"	5821
2	Torque Warning Decal	8007

Tandem AP Kit: 42 1/4" - Part No. 9937  
A - 35 1/2" B - 42 1/4" Equalizer - 15 3/4"

Qty.	Part Description	AL-KO Part No.
2	Front Hanger	7417
2	Rear Hanger	7418
2	Center Hanger	7416
1	RH Equalizer	8320
1	LH Equalizer	8319
2	Equalizer Nut, 1" - 8 UNC Lock	6716
4	Hanger Nut, 3/4" - 10 UNC Lock	6715
2	Equalizer Bolt, 1" - 8 UNC-2A x 6 1/4"	5819
4	Hanger Bolt, 3/4" - 10 UNC-2A x 4 3/4"	5821
2	Torque Warning Decal	8007

Tandem AP Kit: 42 1/4" - Part No. 9938  
A - 38 1/2" B - 48 1/4" Equalizer - 21 3/4"

Qty.	Part Description	AL-KO Part No.
2	Front Hanger	7417
2	Rear Hanger	7418
2	Center Hanger	7416
1	RH Equalizer	8316
1	LH Equalizer	8315
2	Equalizer Nut, 1" - 8 UNC Lock	6716
4	Hanger Nut, 3/4" - 10 UNC Lock	6715

### Parts List

Tandem AP Kit: 48 1/4" - Part No. 9938 (continued)

Qty.	Part Description	AL-KO Part No.
2	Equalizer Bolt, 1" - 8 UNC-2A x 6 1/4"	5819
2	Hanger Bolt, 3/4" - 10 UNC-2A x 4 3/4"	5821
2	Torque Warning Decal	8007

Triple AP Kit: 42 1/4" - Part No. 9939  
A - 35 1/2" B - 42 1/4" Equalizer - 15 3/4"

Qty.	Part Description	AL-KO Part No.
2	Front Hanger	7417
2	Rear Hanger	7418
4	Center Hanger	7416
2	RH Equalizer	8320
2	LH Equalizer	8319
4	Equalizer Nut, 1" - 8 UNC Lock	6716
6	Hanger Nut, 3/4" - 10 UNC Lock	6715
4	Equalizer Bolt, 1" - 8 UNC-2A x 6 1/4"	5819
6	Hanger Bolt, 3/4" - 10 UNC-2A x 4 3/4"	5821
2	Torque Warning Decal	8007

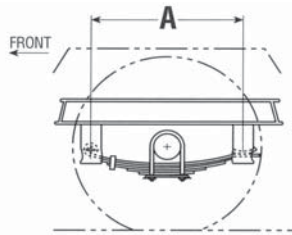
Triple AP Kit: 42 1/4" - Part No. 9940  
A - 38 1/2" B - 48 1/4" Equalizer - 21 3/4"

Qty.	Part Description	AL-KO Part No.
2	Front Hanger	7417
2	Rear Hanger	7418
4	Center Hanger	7416
2	RH Equalizer	8316
2	LH Equalizer	8315
4	Equalizer Nut, 1" - 8 UNC Lock	6716
6	Hanger Nut, 3/4" - 10 UNC Lock	6715
4	Equalizer Bolt, 1" - 8 UNC-2A x 6 1/4"	5819
6	Hanger Bolt, 3/4" - 10 UNC-2A x 4 3/4"	5821
2	Torque Warning Decal	8007

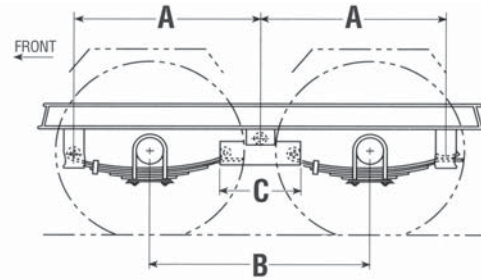
# Attaching Parts Kits

AL-KO 10K - 16K

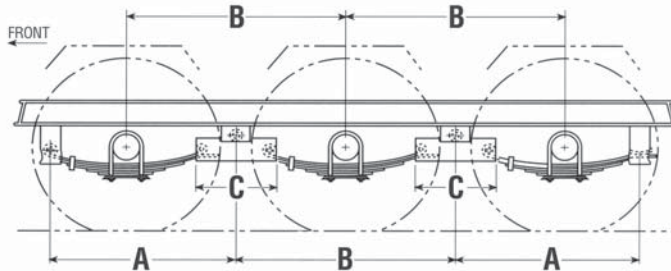
**SINGLE AXLE**



**TANDEM AXLE**



**TRIPLE AXLE**



**Parts List**

16K Single AP Kit: Part No. 60190801  
 16K Tandem AP Kit : Part No. 60190804  
 16K Triple AP Kit: Part No. 60190805

**AL-KO & Hayes  
 Suspension Components**

Single	Quantity Tandem	Triple	Description	Hayes Part No.
1	2	2	Front Hanger	09282404
	2	2	Rear Hanger	09282403
—	2	2	Center Hanger	09292500
—	1	2	RH Equalizer	See Above
—	1	2	LH Equalizer	See Above
—	2	4	Equalizer Nut, 1" - 8 UNC Lock	090636
4	4	6	Hanger Nut, 3/4" - 10 UNC Lock	090637
—	2	4	Equalizer Bolt, 1" - 8 UNC-2A x 6 1/4"	090746
2	4	6	Hanger Bolt, 3/4" - 10 UNC-2A x 4 3/4"	090754

Spring	9K 4LF 4500LB	10K 5LF 5000LB	12K 6LF 6250LB	16K 6LF 8000LB
<b>AL-KO</b>	<b>8130</b>	<b>8131</b>	<b>8132</b>	—
Hayes	093175	093161	09318211	09318214
<b>U-Bolt</b>	<b>9K</b> 5/8" x 9 1/2"	<b>10K</b> 5/8" x 9 1/2"	<b>12K</b> 5/8" x 10 1/2"	<b>16K</b> 5/8" x 10 1/2"
<b>AL-KO</b>	<b>5912</b>	<b>5912</b>	<b>5913</b>	<b>5913</b>
Hayes	091148	091148	091126	091126
<b>U-Bolt Nut</b>	<b>9K</b> 5/8" - 11	<b>10K</b> 5/8" - 11	<b>12K</b> 5/8" - 11	<b>16K</b> 5/8" - 11
<b>AL-KO</b>	<b>6713</b>	<b>6713</b>	<b>6713</b>	<b>6713</b>
Hayes	090622	090622	090622	090622
<b>Tie Plate</b>	<b>9K</b> Slotted	<b>10K</b> Slotted	<b>12K</b> Slotted	<b>16K</b> Slotted
<b>AL-KO</b>	<b>7708</b>	<b>7708</b>	<b>7708</b>	<b>7708</b>
Hayes	09123716	09123716	09123716	09123716

**Equalizer**

RH	LH	A	B	C
09138707	09138706	33 3/8"	38"	11 1/2"
09138709	09138708	35 1/2"	42 1/4"	15 3/4"
09138711	09138710	38 1/2"	48 1/4"	21 3/4"
Single AP Kit		29 1/4"	—	—

10 - 16K