

## 700-2,200 lb. Spring Axles

Typical Industries & Applications include:

- Marine Trailers
  - Personal Water Craft
  - Boat
- Open Utility Trailers
  - Landscape
  - Sport Utility—motorcycle, quad and tri wheel units



### Mounting and Dimensions

In order to minimize tire wear and axle performance issues Axis recommends that the following guidelines be followed when specifying axles within the 700 to 2,200 lb. The difference between hub face and spring center based on spindle and brake flange.

Type	Flange	Minimum	Maximum
Straight Spindle	No Brake Flange	10.00"	16"
Straight Spindle	Flanged	12.00"	16"
4" Drop Spindle	Flanged	15.00"	18"



### OPTIONS:



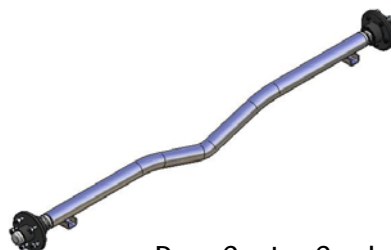
Spring Axle Under Slung



Spring Axle Over Slung



4" Drop Spindle



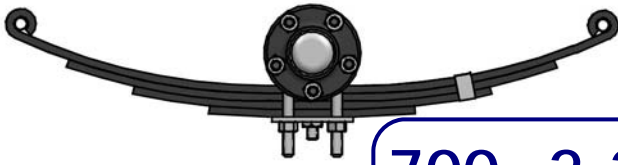
Drop Center Camber



Standard Camber

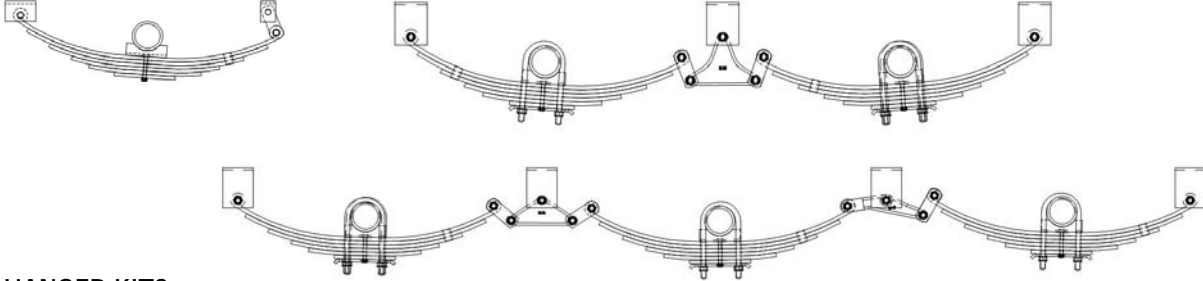
Available Finishes include:

- Powder Coating
- Galvanized
- Wet Paint



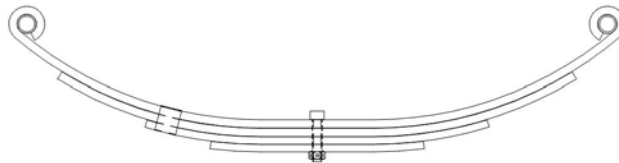
# 700-2,200 lb. Spring Axles

## DOUBLE EYE SPRING AXLE CONFIGURATIONS



### HANGER KITS

CONFIGURATION	AXIS P/N	AXIS P/N ZINC PLATED	AXLE SPACING (STANDARD 33")	DESCRIPTION (CONTENTS)
SINGLE KITS	7024006000	7024056000	25 3/4" Hanger Spacing	4 pcs. 18-12 Link, 2 pcs. 28-6 Hanger, 2 pcs. 93003 Hanger, 6 pcs. 3" Shackle Bolt, 6 pcs. Lock Nut
	7024004000	7024054000	25 3/4" Hanger Spacing	4 pcs. 18-12 Link, 2 pcs. 28-5 Hanger, 2 pcs. 93003 Hanger, 6 pcs. 3" Shackle Bolt, 6 pcs. Lock Nut
TANDEM KITS	7024023000	7024073000	29-1/2" Hanger Spacing	8 pcs. 18-11 Link, 2 pcs. 13-10 Equalizer, 6 pcs. 28-6 Hanger, 14 pcs. 3" Shackle Bolt, 14 pcs. Lock Nut
	7024025000	7024075000	29-1/2" Hanger Spacing	8 pcs. 18-11 Link, 2 pcs. 13-10 Equalizer, 6 pcs. 28-5 Hanger, 14 pcs. 3" Shackle Bolt, 14 pcs. Lock Nut
	7024026000	7024076000	29-1/2" Hanger Spacing	8 pcs. 18-11.5 Link, 2 pcs. 13-10 Equalizer, 6 pcs. 28-5 Hanger, 14 pcs. 3" Shackle Bolt, 14 pcs. Lock Nut
TRIPLE KITS	7024033000	7024083000	Front/Rear Hanger 29-1/2", Center Hanger 33"	16 pcs. 18-11 Link, 4 pcs. 13-10 Equalizer, 8 pcs. 28-6 Hanger, 24 pcs. 3" Shackle Bolt, 24 pcs. Lock Nut
	7024035000	7024085000	Front/Rear Hanger 29-1/2", Center Hanger 33"	16 pcs. 18-11 Link, 4 pcs. 13-10 Equalizer, 8 pcs. 28-5 Hanger, 24 pcs. 3" Shackle Bolt, 24 pcs. Lock Nut
	7024036000	7024086000	Front/Rear Hanger 29-1/2", Center Hanger 33"	16 pcs. 18-11.5 Link, 4 pcs. 13-10 Equalizer, 8 pcs. 28-5 Hanger, 24 pcs. 3" Shackle Bolt, 24 pcs. Lock Nut

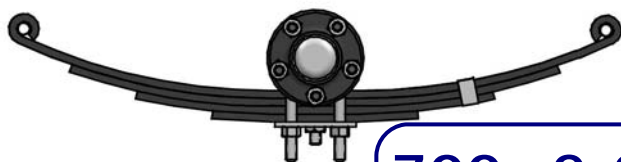


### DOUBLE EYE SPRINGS

AXIS P/N	CAPACITY (each)	LENGTH	Description
780312620500	530	26-1/8"	Double Eye 26" 5015-2
780312620750	800	26-1/8"	Double Eye 26" 5015-3
780312020850	850	20-1/2"	Double Eye 20 1/4" 72-16
780312021000	1000	20-1/2"	Double Eye 20" 72-17
780312621000	1060	26-1/8"	Double Eye 26" 5015-4
780312521250	1250	25-1/4"	Double Eye 25 1/4" 72 - 22

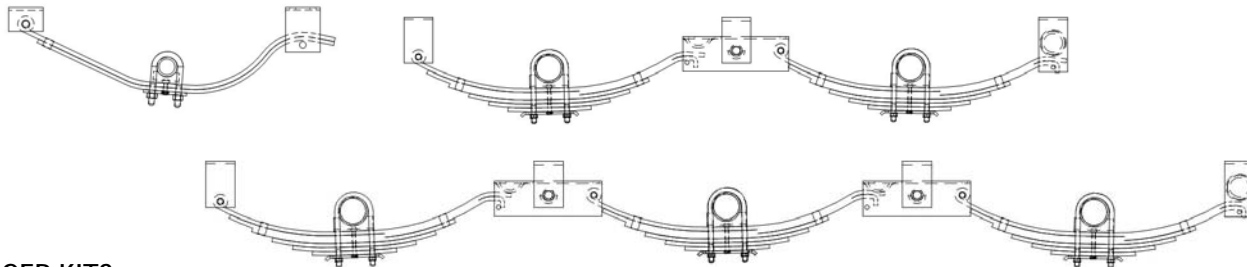
↳ Contact Axis Product Service and Sales Department to Order

**Quality Driven...**  
**Customer Focused**



## 700—2,200 lb. Spring Axles

### SLIPPER SPRING AXLE CONFIGURATIONS



### HANGER KITS

CONFIGURATION	AXIS P/N	AXLE SPACING (TYPICAL)	DESCRIPTION (CONTENTS)
SINGLE KITS	7024042000	33-1/2" Spacing, 24" Hanger	4 pcs. 79-160 Hanger, 4 pcs. 3-1/2" Shackle Bolt, 4 pcs. Lock Nut
	7024043000	33-1/2" Spacing, 24" Hanger	2 pcs. 28-1 Hanger, 2 pcs. 30-28 Hanger, 2 pcs. 7-7 Keeper Bolt, 2 pcs. 6-11 Keeper Nut, 2 pcs. 3-1/2" Shackle Bolt, 2 pcs. Lock Nut
TANDEM KITS	7024044000	33-1/2" Spacing, 28 7/8" Hanger 36" Spacing, 30 5/8" Hanger	2 pcs. 29-1 Hanger, 2 pcs. 28-1 Hanger, 2 pcs. 30-28 Hanger, 2 pcs. 13-4 Equalizer, 2 pcs. 7-1 Equalizer Bolt, 2 pcs. 6-3 Nut, 4 pcs. 7-7 Keeper Bolt, 4 pcs. 6-11 Keeper Nut, 4 pcs. 3-1/2" Shackle Bolt, 4 pcs. Lock Nut
	7024045000	33-1/2" Spacing, 28 7/8" Hanger 36" Spacing, 30 3/8" Hanger	2 pcs. 29-1 Hanger, 2 pcs. 28-1 Hanger, 2 pcs. 30-28 Hanger, 2 pcs. 13-44 Long Equalizer, 2 pcs. 7-1 Equalizer Bolt, 2 pcs. 6-3 Nut, 4 pcs. 7-7 Keeper Bolt, 4 pcs. 6-11 Keeper Nut, 4 pcs. 3-1/2" Shackle Bolt, 4 pcs. Lock Nut
TRIPLE KITS	7024046000	33-1/2" Spacing, Front/Rear 28-7/8" Center 33" 36" Spacing, Front/Rear 30-3/8" Center 35"	4 pcs. 29-1 Hanger, 2 pcs. 28-1 Hanger, 2 pcs. 30-28 Hanger, 4 pcs. 13-4 Equalizer, 4 pcs. 7-1 Equalizer Bolt, 4 pcs. 6-3 Nut, 6 pcs. 7-7 Keeper Bolt, 6 pcs. 6-11 Keeper Nut, 6 pcs. 3-1/2" Shackle Bolt, 6 pcs. Lock Nut
	702404700	33-1/2" Spacing, Front/Rear 28-7/8" Center 33" 36" Spacing, Front/Rear 30-3/8" Center 35"	4 pcs. 29-1 Hanger, 2 pcs. 28-1 Hanger, 2 pcs. 30-28 Hanger, 4 pcs. 13-44 Long Equalizer, 4 pcs. 7-1 Equalizer Bolt, 4 pcs. 6-3 Nut, 6 pcs. 7-7 Keeper Bolt, 6 pcs. 6-11 Keeper Nut, 6 pcs. 3-1/2" Shackle Bolt, 6 pcs. Lock Nut

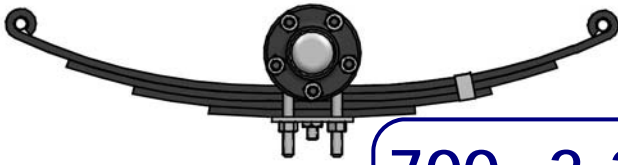


### SLIPPER SPRINGS

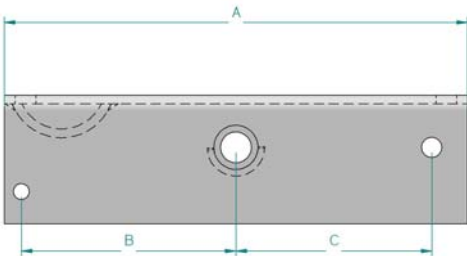
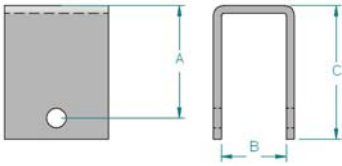
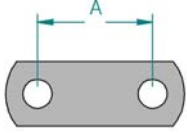
AXIS P/N	CAPACITY	LENGTH	Description
780313037500	750	24-1/4"	Slipper Leaf Spring SR-WE3
780312931000	1,000	27"	Slipper Leaf Spring 72-2
780312930700	700	24-3/4"	Slipper Leaf Spring 72-3

↳ Contact Axis Product Service and Sales Department to Order

Quality Driven...  
Customer Focused



# 700-2,200 lb. Spring Axles



## SUSPENSION HARDWARE

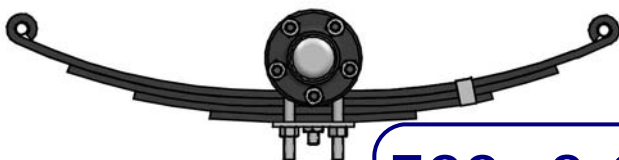
AXIS P/N	Description	A	B	C	Double Eye/ Slipper
750362134000	13-4 Zinc Plated Equalizer	11"	5 1/8"	5 1/2"	Slipper
750816181100	18-11 Zinc Short Shackle Link	2.00"			DE
750816181200	18-12 Zinc Long Shackle Link	3.125"			DE
750816811500	18-11.5 Zinc Medium Shackle Link	2.56"			DE
770361131000	13-10 Cast Equalizer	6 1/16"	4"		DE
770361135300	13-104-2 Banana Equalizer	5 3/4"	2"		DE
770361135900	E1-5 Long Banana Equalizer	7 3/4"	2 7/8"		DE
787815281000	28-10 Extra Long Hanger				DE
787815285000	28-5 Long Hanger	3.25"	1.88"	3.87"	DE
787815286000	28-6 Short Hanger	1.44"	1.88"	2.06"	DE
787815298000	29-8 Medium Hanger	2.00"	1.88"	2.63"	DE
787815930010	93001 Rear Bushed Hanger	1.12"	1.34"	2.125"	DE
787815930300	9303 Rear Hanger	1.00"	1.30"	2.25"	DE
787816181100	18-11 Short Shackle Link	2.00"			DE
787816181200	18-12 Long Shackle Link	3.125"			DE
787816512500	18-13 Extra Long Shackle Link	3.50"			DE
787816811500	18-11.5 Medium Shackle Link	2.56"			DE
750711909181	9/16-18 x 3" Shackle Bolt Zinc				DE
750711909182	9/16-18x3.5" Shackle Bolt Zinc				DE
750721909181	9/16-18 FH Nut S-Loc Zinc				DE
78671909181	Shackle Bolt Lock Nut				DE/Slipper
77071135180	7-7 Keeper Bolt				Slipper
750721305180	6-11 Keeper Bolt				Slipper
770362134000	13-4 Equalizer	11"	5 1/8"	5 1/2"	Slipper
770362134410	13-44 Long Equalizer	13 1/8"	6 1/16"	5 9/16"	Slipper
770362135500	13-105-2 Cast Equalizer	6 3/4"	2 7/8"		Slipper
770362135600	EQ-356 Cast Equalizer	6 1/8"	2 1/2"		Slipper
770711214090	7-1 Equalizer Bolt				Slipper
770722124090	6-3 Equalizer Bolt Nut				Slipper
770815281000	28-1 Front Hanger	4.16"	2.20"	4.78"	Slipper
770815291000	29-1 Equalizer Hanger	3.5"	3.06"	4.78"	Slipper
770815302800	30-28 Rear Hanger	3.94"	2.25"	5.72"	Slipper
786711909182	3-1/2" Shackle Bolt				Slipper

## U-Bolts & Tie Plates

AXIS P/N	Description
787814121000	12-1 Tie Plate for 1-3/4" Spring
750814121000	12-1 Zinc Tie Plate for 1-3/4" Spring
750730008030	1/2-20 Zinc U-Bolt Lock Nut
750711108207	4-3/8" U-Bolt 1-3/4" Tube 11-41 Zinc
750711108208	4-7/8" U-Bolt 1-3/4" 11-42 Zinc

Contact Axis Product Service and Sales Department to Order

Quality Driven...  
Customer Focused



## 700-2,200 lb. Spring Axles

### BRAKES

AXIS P/N	Description
770512307200	7" Electric Brake Left Hand
770512407200	7" Electric Brake Right Hand
770512307500	7" Electric Brake w/ Park Left Hand
770512407500	7" Electric Brake w/ Park Right Hand
795513307210	7" Hydraulic Brake Left Hand
795513407210	7" Hydraulic Brake Right Hand

### HUBS (All Parts (w/AP) Includes—Bearings, Seal, Dust Cap, Wheel Nuts & Grease)

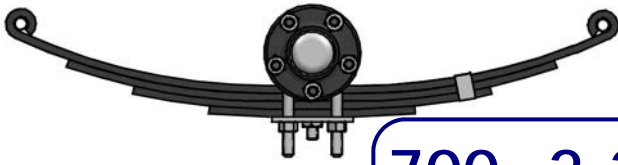
AXIS P/N w/AP	AXIS P/N Race Only	Bolt Pattern	Description
702320500000	770412804412	4 on 4	H-100-S
702322200000	770412705509	5 on 4-1/2	H-150-S Small Flange
702323500000	770412805512	5 on 4-1/2	H-151-S Large Flange
702325200000	771412507410	4 on 4	HD-700-A 7" Drum for Hydraulic Brake
702326200000	771412505510	5 on 4-1/2	HD-700-C 7" Drum for Hydraulic Brake
702327200000	770412207410	4 on 4	HD-DX7-4 7" Drum for Electric Brake
702327800000	770412207510	5 on 4-1/2	HD-DX7-5 7" Drum for Electric Brake

### HUB HARDWARE

AXIS P/N	Description
766251226700	DL-220 Double Lip Seal
764254446490	L-44649 1-1/16" Bearing
770413247590	2" Press-In Stud for Idler Hubs Only
785452213000	21-3 Grease Cap for Use With Plain Spindle
770963130000	21-41 Grease Cap for Use With Plain SAF-T-LUB Spindle
770963110000	85-1 Rubber Plug for SAFE-T-LUBE Grease Caps
786721408200	1/2-20 Cone Wheel Nut
770963120000	5-101 Tang Washer for SAF-T-LUB
786930200000	"O"--Washer for Standard Spindle for Use with Standard Spindle
786722016140	1-14 Slotted Jam Nut
786940000000	1/8" x 1-3/4" Cotter Pin for Use with Standard Spindle
786930000000	"D" Washer for Use with SAF-T-LUB Spindle

↳ Contact Axis Product Service and Sales Department to Order

**Quality Driven...**  
**Customer Focused**



## 700-2,200 lb. Spring Axles

### WHEEL & TIRE ASSEMBLIES

AXIS P/N	DESCRIPTION	WHEEL DIA.	TYPE	LOAD RANGE	SLR	PSI	MAX LOAD CAP. (LBS)
751060364204	4 on 4" White Wheel	Bias	4.80-8	B	7.9	60	590
751060552204	5 on 4.5" White Wheel	Bias	4.80-12	C	9.5	90	990
75106725204	4 on 4" White Mods	Bias	4.80-8	C			
75106725205	5 on 4.5" White Mods	Bias	4.80-8	C			
751050028307	4 on 4" White Spoke	Bias	4.80 x 12	B	7.9	60	780
751050030307	4 on 4" White Spoke	Bias	4.80 x 12	C	9.5	90	990
751050031307	5 on 4.5" White Spoke	Bias	5.30 x 12	B	10.2	55	840
751050034307	4 on 4" White Spoke	Bias	5.30 x 12	C	7.9	80	1045
751050035307	5 on 4.5" White Spoke	Bias	5.30 x 12	C	7.9	80	1045

Quality Driven...  
Customer Focused